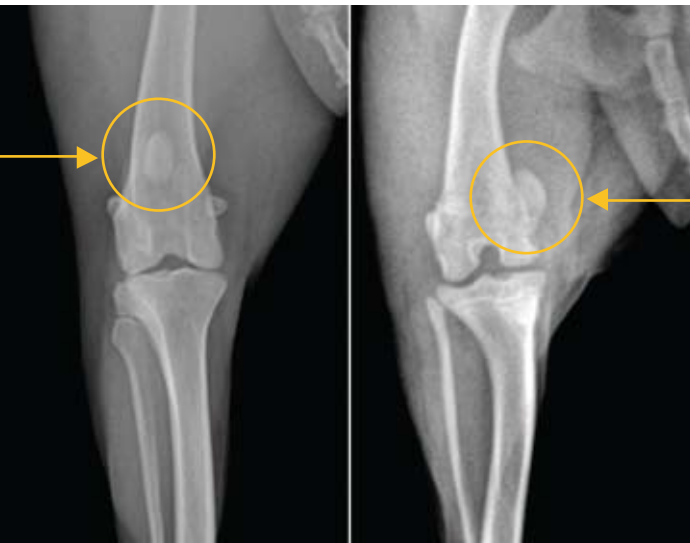


Patella Luxation

Luxation (dislocation) of the patella, or kneecap, is a relatively common problem in pets. This condition most often affects small and toy breeds, but can also be seen in larger individuals. For most individuals, the problem is congenital, or present at birth and can vary in severity.



Normal patella position

Medial patella luxation

The patella can luxate in one of two directions, either laterally (to the outside) or medially (to the inside). The most common type is a medial luxation of the patella. The severity of the luxation varies from patient to patient, some remain in place most of the time and require force in the offending direction to demonstrate the luxation. In others, the patella is luxated permanently and cannot be reduced.

Results of patella luxation surgery depend upon the severity of the problems found within the joint, and the level of arthritis present. Surgical stabilization of a knee with a patella luxation can help slow the progression of arthritis and maintain patient comfort. Recovery after surgery can range from 6-10 weeks, depending upon the procedure performed. Packerland Veterinary Center also offers accelerated rehabilitation using our Underwater Treadmill, which can significantly reduce recovery time. Underwater Treadmill therapy can typically start three weeks after surgery.



For more Information or to Schedule a Consultation, please call: (920) 498-2808 or 800-236-2808.

www.packerlandvet.com



PATELLA LUXATION (DISLOCATION)



 Packerland
VETERINARY Center, Ltd.

121 Packerland Dr. Green Bay, WI 54303
Phone: (920) 498-2808 Fax: (920) 498-1365

www.packerlandvet.com

The difficulty with patella luxation is that it causes mechanical problems of the leg, making it difficult for the patient to stand or use the limb. This change in the mechanics creates a very unstable joint and forces the pet to utilize excess muscular, tendinous and ligamentous strength to maintain limb use and function. This increases the stress on those structures and creates abnormal forces that can lead to secondary problems. Additionally, the instability within the joint creates inflammation. This inflammation causes Degenerative Joint Disease, or arthritis, to develop within the joint, and can lead to significant pain and decreased mobility.



Mild patella luxations can sometimes be managed with periodic use of non-steroidal anti-inflammatories (NSAIDs), which help to decrease inflammation and discomfort. However, the only way to correct a patella luxation permanently is through surgery. The type of surgical correction performed is dependent upon the cause and degree of the patella luxation. Under normal circumstances, the patella rides up and down within a groove in the bottom portion of the Femur (thigh bone). This is known as the Trochlear Groove. Sometimes, this groove is abnormally shallow and allows the patella to slip out and dislocate. Surgical deepening of the groove is performed in these individuals. Luxation in other patients may occur due to malalignment of the tendon associated with the patella. For these individuals, the attachment site of the tendon is moved to create better alignment so the patella is not pulled out of position. Occasionally there are rotation or angulation abnormalities of either the Femur or Tibia (lower leg bone), which predisposes the patella to luxate. In these patients, the abnormal angulation must be corrected.



*Post-op Luxating Patella Correction
Lateral View*



*Post-op Luxating Patella Correction
PA View*